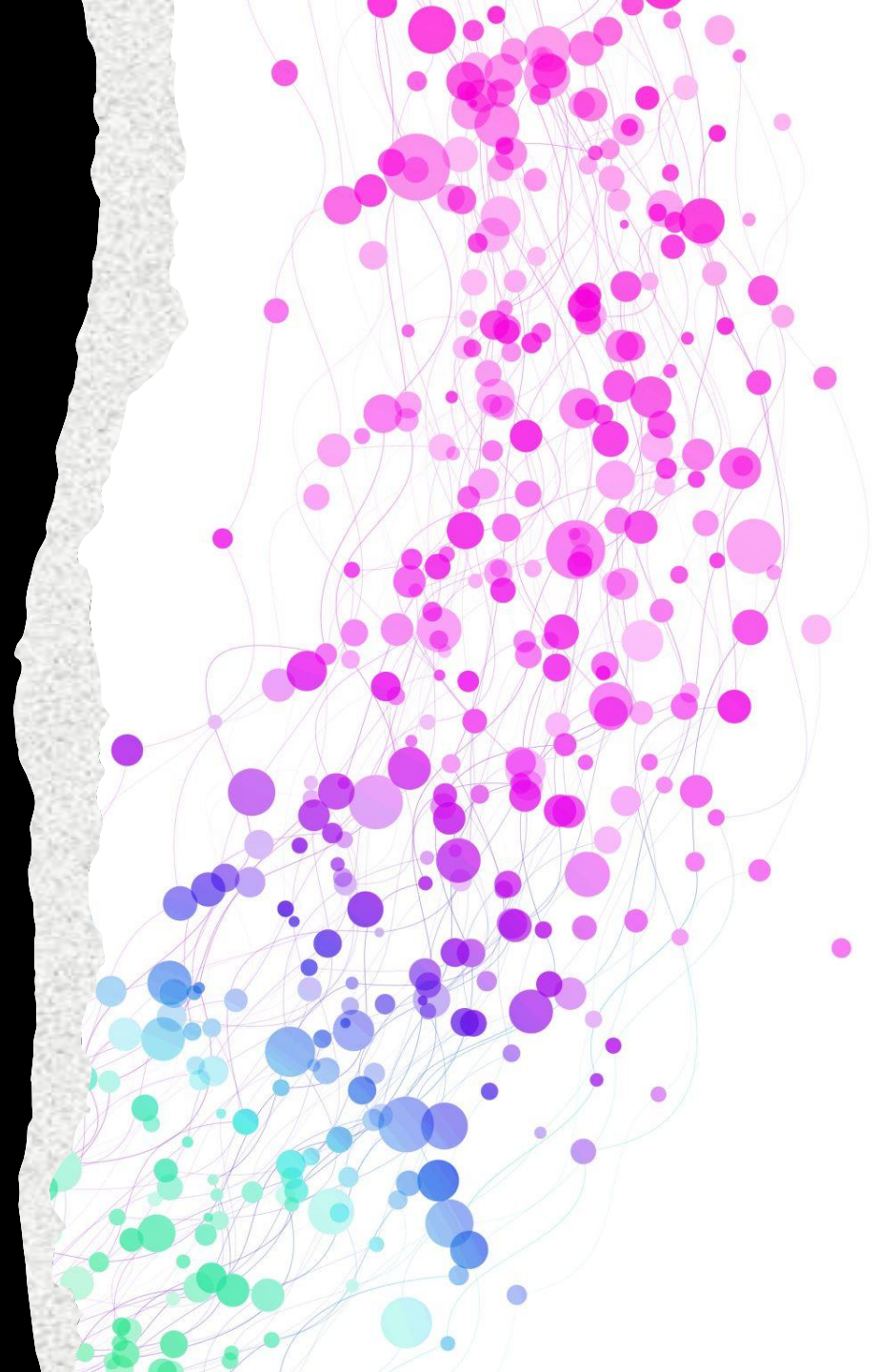


Accessorizing Your Percussion Section

Understanding auxiliary and accessory percussion.

Gerald Noble

Director of Percussion, Wright State
University



OVERVIEW

- Sound, tone, context
 - Cloyd Duff ““In this business you get paid for what you sound like”
- Dynamic context
- What wind/brass/string instrument is your percussionist playing with in each section?
- How to manage a set-up?
- Sometimes of you can hire a percussionist to be in your band room daily. Most of you cannot—if you cannot, you are the percussion expert in your band room. Experiment with these instruments.
- The companies I list have the better sounds to my ears.

TAMBOURINE



Tambourine

Techniques:

- Shake rolls
- Knee-hand
- Thumb rolls
- Wrist or arm—depending
- Loud gestures=full stroke

TOOLS:

- Towel
- Case
- Beeswax
- Moleskin-mute the bottom of the head to keep tambourine dry

MUSICAL CONSIDERATIONS

- **Tambourine is often supporting the melody line rhythmically**
- Rolls begin and end with a tap especially loud rolls—stronger beginning
- Sounds need to be clear, full, and dry
- Tone quality of jingles: full, dark
- A dry/muted head allows the jingles to be the focus
- Rhythmic material needs to be crisp, articulate, be with the ensemble
- Volume is controlled by technique (up, set on knee, knee-hand, thumb vs shake roll)

DON'T BUY ANY OF THESE AS YOUR PRIMARY TAMBOURINE



alamy

Image ID: 105877
www.alamy.com

Things to look for in a Tambourine

- Double row
- Calf or Goatskin head (Plastic/synthetic head issues)
- Hammered Jingles

Tambourine Companies

- Black Swamp (\$255)* I recommend the TC1 Combination
- Black Swamp Overture Series—Educational model (\$155)
- Grover (\$240)
- There are other cheaper models made by reputable companies that do not sound good to my ears.
- You get what you pay for.

23420 • Tambourine Ensemble (7)
Medium (ca. 3:50)

RHYTHMIC CEREMONIAL RITUAL

for Seven Antiphonal Tambourines

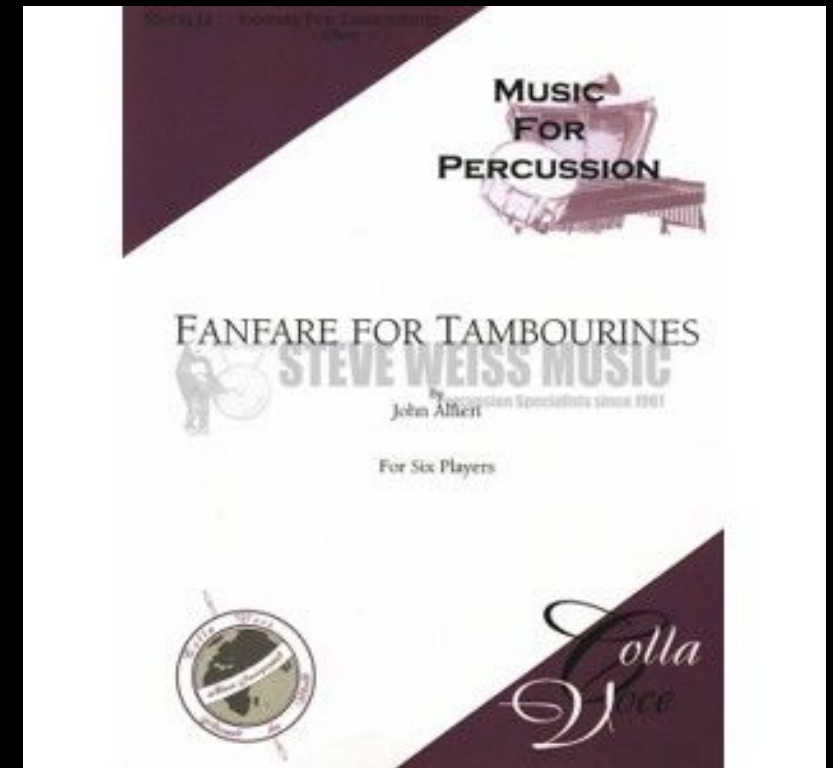
Zachary Cairns
(ASCAP)

C. Alan
publications
LEADER

TAMBOURINE COMPOSITIONS

....yes this is real...&
valuable.

Conversation for Two Tambourines By Bobby Lopez



Fanfare for Tambourines By John Alfieri

*My favorite for educational situations

Rhythmic Ceremonial Ritual By Zachary Cairns

Crash Cymbals



TECHNIQUE

- Angle relative to volume
- Flam
- Both arms move

MUSICAL CONSIDERATIONS

- **Cymbals are often supporting the full sound of an ensemble, serve as an accent point in the melody.**
- In marches, they serve as rhythm and accent points to the melody.
- The crash sound should be resonant until the next appropriate rest
- Tone quality: full, dark, resonant, and beautiful
- Soft playing is tricky, but relatively easy if communicated well. Do's and don'ts—don't hit just the edge. DO connect the full cymbal.

Volume is controlled by angle and motion

Cymbal Companies

- Zildjian (\$600-\$900) *I recommend starting with 18" K Symphonic Zildjian
- Sabian (\$500-\$800)
- Dream (\$600-\$800)

02460 • Percussion Ensemble (8)

CRASH COURSE

James Campbell



STEVE WEISS MUSIC

Percussion Specialists since 1961



Cymbal composition: Crash Course by James Campbell



TRIANGLE TECHNIQUE

- Hold triangle up—not clipped to a music stand
- Wrist motion like a ride cymbal or timpani gesture
- Lift off the triangle
- Rolls are light and wristy—does not have to be super fast if you have a good sound.

MUSICAL CONSIDERATIONS

- Triangles add a nice splash of color, can accent passage, highlight a melodic entrance, provide rhythmic interaction, etc.
- The triangle sound should be resonant until the next appropriate rest
- Tone quality: light, resonant, and beautiful
- Volume is controlled by force of the stroke.

TRIANGLE COMPANIES

- Alan Abel (\$120) *Abel 6” is my recommendation
- Black Swamp (\$112)
- Matt Nolan (\$150)
- Many other brands of custom triangles....

TRIANGLE CLIP and BEATER COMPANIES

- Freer (\$38)*
- Black Swamp (\$45)
- Many others—and can be hand crafted.
- String should be very thin, doubled up for back up, and short.
- BEATERS Range from \$10-\$38
- Companies: *Freer, Stoessel, Black Swamp, etc.

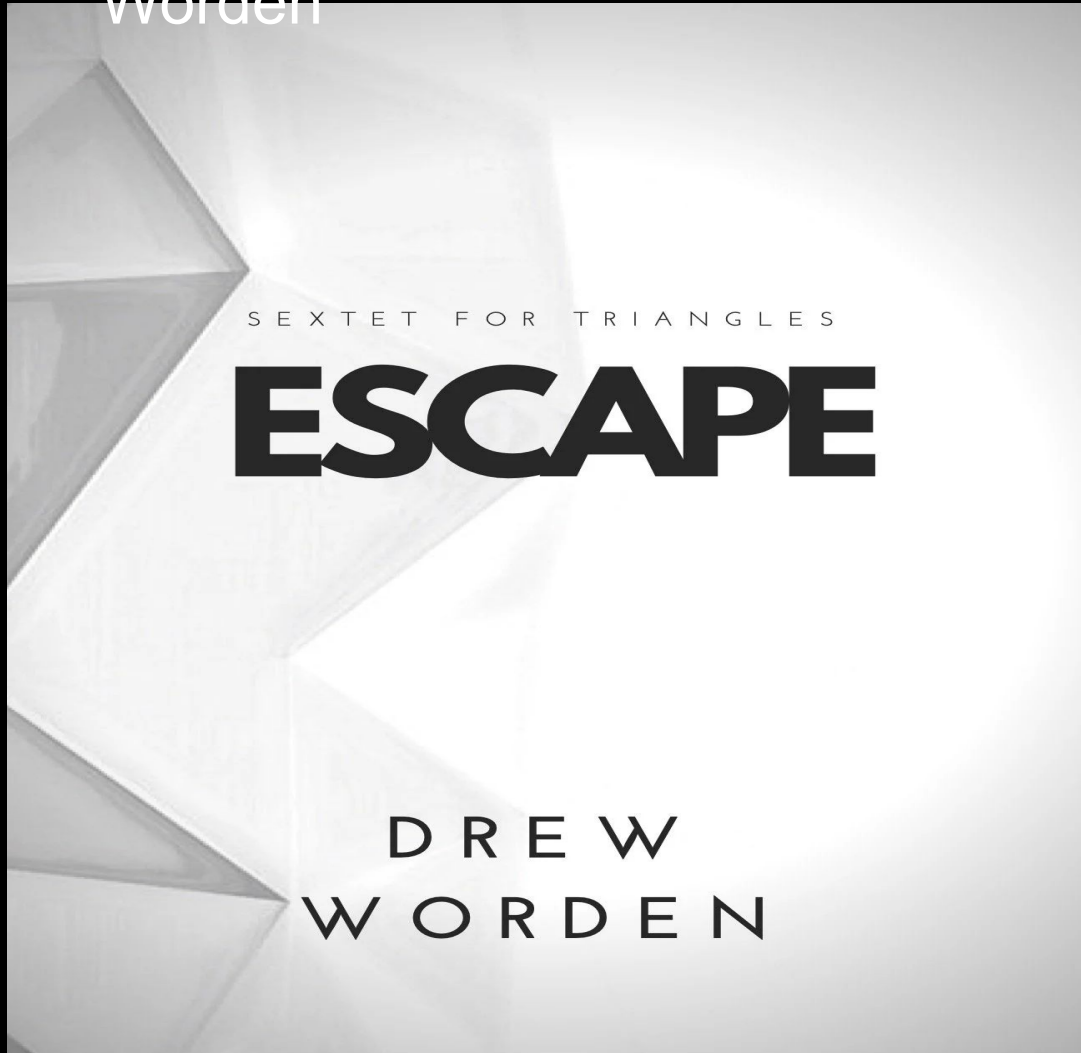


These are not ideal triangle clips



Triangle compositions (From the composer's websites)

Sextet for Triangles by Drew Worden



For Triangles by Matthew McBane



Suspended Cymbal



SUSPENDED CYMBAL

GENERAL OVERVIEW

- I use vibraphone mallets for general use.
- Light touch, slower speed for roll, outer edge, mallets on opposite sides
- Sounds can range from beautiful and warm to sharp and contrasting.
- Sound should be full, warm, and directional
- Other mallet implements requested often: snare stick, scrape sound (triangle beater), small chain
- COMPANIES: Zildjian, Sabian, etc. (Prices range from \$250 - \$2000)

CASTANETS



CASTANETS

GENERAL OVERVIEW

- They are played on your leg or on a “castanet machine”
- I put the lower pitch castanet in my left hand
- Sound should be clear and warm
- Other implements: castanet machine for ease of moving quickly, castanet machine for fuller sound hitting castanets against castanettes COMPANIES: Black Swamp, Epstein, etc. (Price range \$150-\$250)
- *I recommend Black Swamp Castanets

WOOD BLOCKS



Wood Blocks

GENERAL OVERVIEW

- **MALLETS:** medium hard rubber mallets, drumsticks, hard rubber mallet
 - Sound ranges from warm to ticky to abrasive depending on the context
 - Sound should be full, warm. Can be played up or on a stand.
 - **COMPANIES:** Black Swamp, Pearl, Vaughncraft, Latin Percussion (LP) (Prices range from \$40-\$50)
- *I recommend the LP Blue Jam Block

SHAKERS



SHAKERS/MARACAS

GENERAL OVERVIEW

- SHAKERS—16th notes: each sound needs to be even
- For band I would use a loud articulate shaker
- Sounds can range from mellow/legato to staccato/articulate
- COMPANIES: Pearl, LP, Meinl, etc. (Prices range from \$15-\$40)

Wind Chimes, Bell Tree and Mark



Wind Chimes, Bell Tree, Mark Tree

OVERVIEW

- What's the difference?
- Mark Tree=Wind Chimes
- Bell Tree and Wind Chimes usually play low to high
- Use a cymbal stand for wind chimes
- Bell Tree-use a triangle beater or brass bell mallet